



# GMT MONTHLY MEMBERSHIP PROGRESS REPORT

Results as of: 11/30/2023

Multiple District 12

LOCATION: TENNESSEE

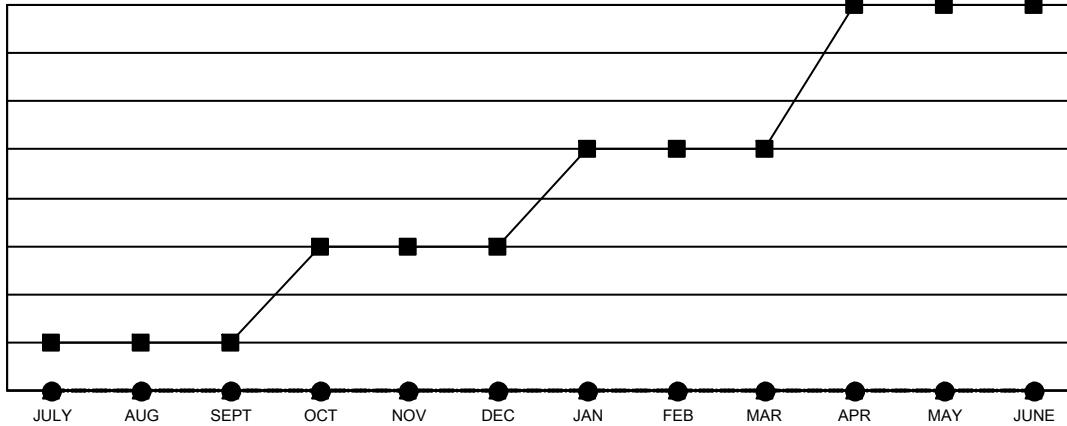
GMT: OPEN

GMT CA 1

Clubs			
RESULTS FOR 2023-2024			
QUARTER	NEW CLUB GOAL	NEW CLUBS	DROPPED CLUBS
JULY/AUG/SEPT	1	0	1
OCT/NOV/DEC	2	0	0
JAN/FEB/MAR	2	0	0
APR/MAY/JUNE	3	0	0

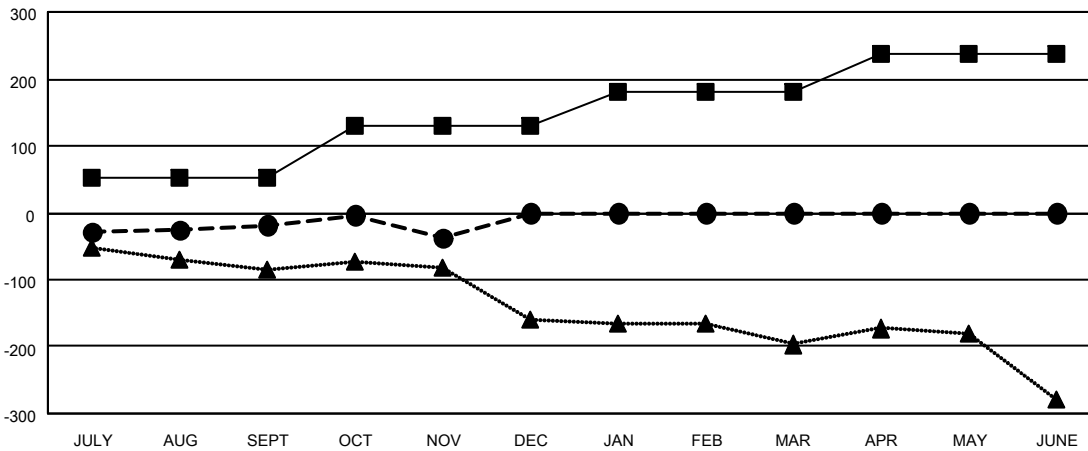
Members			
RESULTS FOR 2023-2024			
QUARTER	MEMBER GROWTH NET GOAL	MEMBER GROWTH ACTUAL	DROPPED MEMBERS ACTUAL (including transfers)
JULY/AUG/SEPT	52	84	94
OCT/NOV/DEC	77	82	93
JAN/FEB/MAR	52	0	0
APR/MAY/JUNE	56	0	0

GOALS AND ACTUAL NEW CLUBS CUMULATIVE



- - CURRENT YEAR GOALS FOR NEW CLUBS
- - CURRENT YEAR ACTUAL NEW CLUBS
- ▲ - LAST YEAR ACTUAL NEW CLUBS

GOALS AND ACTUAL MEMBERS CUMULATIVE



- - MEMBER GROWTH NET GOAL
- - MEMBER GROWTH ACTUAL
- ▲ - LAST YEAR MEMBERSHIP ACTUAL

DROPPED CLUBS: 1	66 CLUBS OF 187 ADDED 1 OR MORE NEW MEMBERS	<b>GENDER DISTRIBUTION</b>
		MALE 2,314 (59.35%)
		FEMALE 1,585 (40.65%)
<b>DROPPED MEMBERS</b>	<a href="#">CLICK HERE FOR CUMULATIVE MEMBERSHIP DATA</a>	TOTAL FAMILY UNIT MEMBERS 871
DECEASED 20		FAMILY MEMBERS PAYING HALF DUES 444
CLUB CANCELLED 0		
OTHER 167		
<b>TOTAL 187</b>		